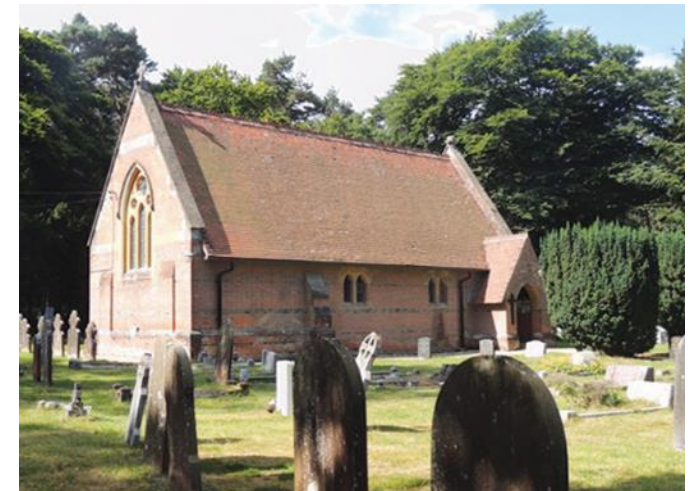




Benefice Profile for a **Priest in Charge** for the parishes of Kingsclere and Ashford Hill with Headley in Whitchurch Deanery



Pictures from top left to top right and down: St Mary's, Kingsclere, St Paul's, Ashford Hill, St Peter's, Headley

INDEX

Welcome	3
Whitchurch Deanery	4
Introduction	5
Our Vision.....	8
Our Church Life	9
St Mary's, Kingsclere.....	9
Ashford Hill and Headley	12
Our People	13
Our Organisation.....	16
Governance	16
Finance - Kingsclere	16
Finance - Ashford Hill with Headley	17
The House.....	18
Role Description.....	22



Welcome

Welcome to this benefice profile and role description ... and welcome to the Diocese of Winchester!

At the heart of our life here is a desire to be always Living the Mission of Jesus. We are engaged in a strategic process to deliver a mission-shaped Diocese, in which parochial, pastoral and new forms of pioneering and radical ministry all flourish. Infused with God's missionary Spirit we want three character traits to be clearly visible in how we live:

- ◆ Passionate personal spirituality
- ◆ Pioneering faith communities
- ◆ Prophetic global citizens

We pray that, if God is calling you to join us in his mission in this part of the world, he will make his will abundantly clear to you.

'As the Father sent me so I send you... Receive the Spirit.' John 20:21

Over the last 3 years we have been in a time of significant pastoral reorganisation. We are actively exploring bringing the neighbouring benefice of Baughurst and Ramsdell and Wolverton with Ewhurst and Hannington into the Benefice. This can only happen with the provision of additional ministerial resource. I would welcome a conversation with you.



David Williams
Bishop of Basingstoke



Whitchurch Deanery

Area Dean

Whitchurch Deanery is as beautiful as any other part of Hampshire, an area of rolling downland in the north together with the upper Test valley, bounded by the Berkshire border and the A303. Our 25 churches serve a population of some 25,000, many of whom take advantage of our excellent transport links to work in London or the large towns that surround us. As a deanery we seek to enable our six benefices to respond to the diocesan vision, and in particular we are developing our capacity to support each other and to engage with new forms of ministry. Our clergy chapter offers encouragement to its members and the space for reflection on our shared ministry. A notable feature of the deanery is the dynamism and warmth of our links with the diocese of Mityana in Uganda and many visits in each direction have been undertaken over recent years.



David Roche, Area Dean



Introduction

We are seeking a Priest-in-Charge for our benefice which comprises the parishes of Kingsclere and Ashford Hill with Headley, within the Whitchurch Deanery. The churches within our benefice are St Mary's, Kingsclere, St Paul's, Ashford Hill and St Peter's, Headley. We are looking to appoint a strong leader who can sensitively serve in both a contemporary and traditional setting, particularly as we undergo a pastoral review and potentially expand our benefice.

Our benefice is located in north Hampshire, between Newbury and Basingstoke. It is an attractive place to live and work. The Downs, including the well-known Watership Down, border the area to the south, provide magnificent walking, running, bird-watching, mountain biking and horse-riding opportunities. Racehorses are trained on the gallops nearby.

The area is not far from major routes and transport hubs. Central London is just 50 miles away with excellent rail services from Basingstoke, Newbury or Reading. Winchester and Oxford are also easily reached by car. Airports of varying sizes are within easy reach. The local towns of Newbury, Basingstoke and Reading offer a varied range of retail opportunities, entertainment, and transport links. Each of the three churches within the benefice is approximately three miles from the other two. There are numerous clubs and societies including football, rugby, cricket, netball, fitness classes, WI, gardening club, heritage association, film club and walking group plus lots of activities for children. The area is served by healthcare facilities: primary care and dentistry at the health centre in Kingsclere, secondary care at the Hampshire Hospitals NHS trust at Basingstoke and Winchester or the Royal Berks Hospital at Reading.



In our benefice, we are fortunate to have 3 schools - Kingsclere Church of England Primary School has approximately 227 children on roll and offers good education with Christian values. The school was described as *"a good school with outstanding features"* by Ofsted in 2019. There are excellent and much appreciated links between school and church, and we have two Foundation Governors in our congregation. In Ashford Hill the primary school has approximately 140 students and in Headley, the well-known mixed private pre-prep & prep Cheam School has approximately 400 children between the ages of two and thirteen. Cheam refers to itself as a school affiliated to the Anglican faith and is very supportive of our local churches.



There is also nursery provision in the villages at Jiminy Crickets (Ashford Hill) and Busy Bees (Kingsclere) amongst other registered childminders.

Secondary education is available in Burghclere, Newbury, Whitchurch and Basingstoke, with transport provided.



The population of our benefice is estimated at just under 4500 people – made up as per the table below.

	<u>Kingsclere</u>	<u>AH+H</u>
Population – Estimated in 2020		
Age Group:		
0-17	540	329
18-64	1,675	860
65+	748	255
Total	2,963	1,444

Religion – from 2011 Census				
Christian	2,174	74%	870	75%
Other religions	45	2%	16	1%
None	717	24%	278	24%

Kingsclere

Kingsclere is a traditional English village with St Mary's church and the vicarage in the centre. We are an active church with lots of activities mid-week as well as Sunday services.

Kingsclere has two general purpose stores, a garage, four pubs, hairdressers, barbers, chemist, butchers and an art gallery, a Community Centre and the Village Club. The Community Larder which began during the pandemic runs weekly from our church building.

The village magazine '*The Kingsclere Tower*' is distributed free, monthly, to all the houses in Kingsclere. It is an effective route of communication especially for many of our elderly villagers. St Mary's has a good social media presence with an active Facebook page. Wi-Fi and mobile phone coverage is good across the village.

St Mary's is very fortunate in having the Friends of St Mary's, an independent charity which provides a programme of events to raise funds for the repair and restoration of the church fabric.

The annual church fete attracts large numbers of villagers and those from further afield.



Ashford Hill with Headley.

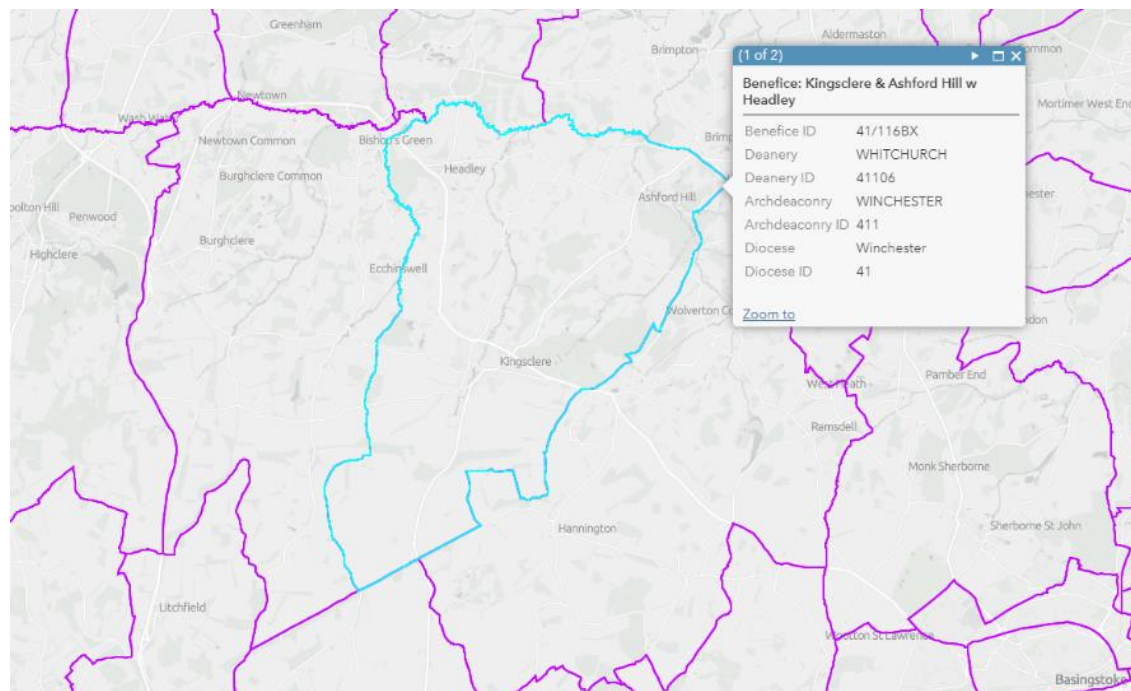
The villages of Ashford Hill and Headley are significantly rural communities. They look to Kingsclere or Tadley as their hub, where friends of ours live, and where we can shop and use the other facilities mentioned above. Headley has a brilliant and well supported Community Shop. While neither village has a pub any longer, there are clubs that meet frequently in one of the two village halls. The beautiful Ashford Hill Water Meadows is a Site of Special Scientific Interest (SSSI), and in fact part of St Paul's Churchyard has been designated as a SSSI as well for the wildflowers that grow there.

We have a vibrant monthly parish magazine which is a PCC property and is delivered to approximately 630 households free of charge. It contains articles relating to our Christian faith but also celebrates local people and businesses. It has in recent years become an increasingly popular magazine by celebrating our local communities. We also have an active parish email list which enables us to promote events at short notice or send local news which can't wait for the next parish magazine.

Our villages have alternately held annual fetes, with at least some of the monies going to our churches.

St Paul's is a large church with a capacity of 250 people. It is well known for its fantastic acoustics and large car park, with the result that it is a favourite for weddings, concerts and other such community gatherings. Headley's church, St Peter's, is a small cosy church having an intimate chapel feel to it.

Parish Map



Our Vision

Since the benefice was created in 2006, the two parishes have been run separately with the concentration of effort being focused on the church community within Kingsclere. A more modern style of worship has been adopted in Kingsclere while the churches in Ashford Hill and Headley provide a more traditional form of service. We hope that with new leadership we can come together as a benefice with a common vision.

We are active churches and seek to build on the successes of previous years as described in the Our Church Life section. We want to be more visible to, and in contact with, our communities and be seen as welcoming churches.

We pray that we can bring the love of Christ to a wider number within our villages. We believe this can be done, first and foremost by having a leader who is active within the villages.

After much prayerful consideration, we see our mission as having three main headings: -

Bless Others

Follow Jesus

Love God's family

Bless Others

- having more contact with a wider variety of people of all ages and welcoming them to our churches
- bringing the love of Christ into our community
- being an inclusive church, which does not discriminate on any level

Follow Jesus

- studying through worship in church, youth bible study, house groups, junior church and discipleship courses
- developing a deeper prayer and worship life
- strengthening the teaching of the Gospel message to the wider community

Love God's family

- growing our worshipping community
- increasing our involvement with families, the elderly and young people
- building on our pastoral care ministry



Our Church Life

St Mary's, Kingsclere

Being a welcoming Church to everyone is very important to us in the life and mission of our benefice and we would like our services to cater for a wide variety of preferences. Presently, we offer a Sunday 10:30am service each week; Holy Communion once a month, and all other Sundays a service of Morning Worship is held. Morning Worship each Thursday at St Mary's began during the pandemic and has grown into a thriving group who enjoy worshipping together and spending time in fellowship after the service.

The priorities identified in our vision are central to the worship and life of our parish, so youth work, pastoral care and discipleship are key to our thinking. We are fortunate to have volunteers supporting our ministry. A retired member of clergy with Permission to Officiate, a Licensed Lay Minister, three Lay Worship Leaders (BCM) and one Pastoral Worker (BCM) provide very valuable help across many areas of Church life. Winchester Diocese requires lay worship leaders and pastoral care workers to undertake a Bishop's Commission for Mission training course (BCM).

We are thankful that at St. Mary's we have a vibrant worshipping community.



Discipleship & Spiritual Development - Life Groups provide a place where people can share their lives, receive, and give pastoral support. We study God's word and grow as disciples, exploring our giftings together. We encourage each other to live as Christians in a rapidly changing world. Our prayer group also meets weekly to pray for the work of the parish. We have successfully run Christianity Explored and Discipleship Explored courses, over Zoom and during lock down, over the past 2 years.

Children and Young People - On Sundays, our Junior Church for children of primary school age meets during the 10:30 service. A Youth Bible Study group for young people of secondary school age meets on a Thursday evening.



For the last 4 years (except in 2020) we held a Summer Holiday Club in the church. Initially this was led by Pulse Ministries but in 2021 we ran it ourselves with many of our enthusiastic volunteers involved. In 2021, 48 children and 12 young helpers attended. This year we ran a one day event called “Game On!”. A day of sport, activities, teamwork, worship and fun for both children and volunteers alike.



Our most recent event related to young people was an Emotional Wellbeing evening for parents of teenagers. This brought together organisations and specialists in their field who gave the parents strategies and tips on how to help their young people.

School - We have a very good relationship with the local Church of England primary school. Two members of our church community are Foundation Governors, and the incumbent is an ex-officio governor as well, so there are plenty of opportunities to visit. The whole school community comes to St Mary's for a dedicated church service four times a year (Harvest, Christmas, Easter and the end of year Leavers Service). The ministry team lead collective worship on a regular basis. In 2023 we are planning a week long event in school where children learn Christian pop songs and at the end of the week a concert in church will showcase their work.

Social and Community Outreach - Saturday coffee morning in the Kingsmill Room, attached to church, runs almost every week. This welcomes many of the older congregation and the wider village community.



We started a Community Larder during the covid pandemic. This supports people to live more independently, “a hand up not a handout” which is a long-term sustainable approach to food insecurity. The larder gives people the opportunity to choose their own food which is really important, and offers a place to meet and chat over coffee as well. A team of 30 volunteers run the larder which currently supports approximately 25 households.

Our annual church fete, held on Bank Holiday Monday in August, raised £10,000 in 2021 with people coming from far and wide. These events are great outreach opportunities for our volunteers. We also provide a range of social opportunities which we are aiming to build on following the reduction in Covid restrictions.



Funerals - Funerals are held in St Mary's, although a great many are conducted on behalf of the parish at the local crematoria. St Mary's churchyard is now closed to burials and the civil cemetery is just outside the village. However, there is a garden of remembrance in which ashes can be interred in the churchyard. In 2021 there were 14 funerals in the parish.

Weddings and Baptisms - An important part of our activity in the community is our approach to pastoral offices. It is a vital part of our outreach work. During 2021 we were blessed to be involved in 6 weddings. Due to Covid restrictions these numbers are lower than an average year, which usually sees about 7 or 8 weddings and 5 or 6 baptisms.

Pastoral Care - Our trained pastoral visitor visits parishioners and is supported by other church members. This is an area we are looking to develop

Music - In our Morning Worship we use iSing Worship, a flexible software package which provides a worship backing track with an on-screen display. In our communion service our organist plays the hymns.

We are looking to develop a team of musicians for live music in services. Our sound and music equipment was upgraded just a few years ago.

Home Communion - Two parishioners are approved to take home communion to those in need, and provide a much appreciated service.

Prayer - St Mary's prayer group meets weekly to offer prayers for the work of the parish and wider prayer needs. A monthly Prayer and Praise evening gives people the chance to meet together to worship and pray both corporately and individually for current issues.

Bell Ringing - We have an active team of bell ringers who enjoy ringing for weddings and special services, as well as Sunday worship.



Ashford Hill and Headley

We have one service at 9:30am every Sunday, the first and second being at St Peter's in Headley and the third and fourth being at St Paul's in Ashford Hill. Holy Communion is said on the 1st and 4th Sundays while a Morning Worship is held on the 2nd and 3rd Sundays. On most Sundays, we have a regular supportive congregation of around 20 people. Sadly, we seldom have many from the younger generations. This is an issue that needs to be considered as a benefice wide issue. In recent years, there has been little contact with the schools in our parish. So, there is a definite opportunity here, but we need the leadership and resource to rebuild those connections.



Our community spirit is good. We have tea, coffee and biscuits after each service, and this provides a good opportunity to get to know each other and build our church community. We have recently held a Sunday morning drinks party to which some 60 people came. Many of these were people who do not come to our churches regularly. It proved a great opportunity to engage with the wider community. We intend to continue holding these events every 3 or 4 months. Our aim is to hold Sunday lunches within St Paul's during which there will be an appropriate time for prayer and worship.

Both our churches are used on a regular basis for weddings and funerals. St Paul's is particularly well suited for the larger of these events due its size and its large car park.

We have a wonderful team of flower and cleaning ladies who are dedicated to our churches.

As mentioned earlier, we would like to improve the facilities within St Paul's – internal toilets and a larger kitchen - in order that we can hold more church

related and secular events. We have plans drawn up, but these now need to be agreed by the PCC, a working party put together to advance the project through the various approval stages with the Diocese and then to raise the money for the works to be undertaken.

Most of our congregants who participate in courses, prayer groups or Life groups will do these as part of those arranged by St Mary's in Kingsclere. We hope that these excellent initiatives can continue and should be organised as a benefice wide initiative as part of the joint mission and pastoral care plans.



Our People



Emma Rivers – Benefice Administrator and BCM Worship Leader

I've been part of St Mary's family since being baptised here as a baby. It's been lovely to grow amongst other Christians and journey with them over the years. In 2009, I was employed as the administrator for the benefice and have become more involved in the day-to-day workings of the parish. I love the variety of the job – from meeting wedding couples to writing the weekly notices, no two days are the same! In 2019 I completed the BCM Worship Leader course which gives another aspect to my church life – leading others in worship. At home my family keep me busy and any spare time usually finds me working out, knitting and crocheting or a real treat is relaxing at a spa for the day!

Kingsclere PCC



Steve Green – LLM - I'm married with children and grandchildren and am a recently retired broadcast transmitter engineer. Brought up a Baptist, I became an Anglican whilst living in Scotland. I felt called to a ministry of support to the local church and trained as an LLM in the 1990's. Outside St Mary's, I enjoy walking and the occasional run. We have family in Somerset, Birmingham and Scotland who we try to visit whenever possible.



Kate Pink – Pastoral Care BCM - I have been worshipping at St Mary's since autumn 2018. I have had various roles in churches over the years, but my desire now is to reach out to those on the margins, both in church life to those that feel they don't belong, and to the community. To this end I am active in the local church community larder, and volunteer as a debt befriender with Christians Against Poverty in Newbury. I have recently started pastoral visits. I love prayer and worship and sharing the good news about Jesus.



John Price – BCM Worship Leader - John is one of our BCM Worship Leaders, and so much more. He's always the one to call on for practical tasks and has a sensible solution to any problem. Besides leading worship John is on the Junior Church Team, Youth Bible Study team and the team that puts on our summer Holiday Club. Whenever we can put together a worship band John plays rhythm guitar. He says "I have worshipped at St Marys since I came to Kingsclere over 20 years ago. I am retired and, sadly, widowed. I became a committed Christian early in my teens and my faith is at the forefront of my life. I have 3 sons and 4 grandchildren, who are all a continual delight to me. It has always been a privilege to sharing my faith with children and young adults and this has been the focus of my Christian service in the past, and still is. Additionally, I became a BCM Worship Leader a few years ago and I now equally enjoy leading our Sunday worship."





Janet Larkins – BCM Worship Leader - I moved to Kingsclere 7 years ago having been an active member of my previous parish church for over 25 years. I was made so welcome by this friendly parish and now think of it as home. I'm enthusiastic about making the church as open and welcoming to people as possible. I've been involved as a group leader at the Summer Holiday Club and am one of the volunteers and organisers of our Community Food larder. I was encouraged during lockdown to take part in the BCM course. I've been leading a Thursday morning worship service, mainly for older people, for the last year and occasional Sunday services.



Lesh Stapley - Treasurer – I have been worshipping at St Mary's Kingsclere since October 2016. I am originally from Botswana and have lived in the UK for 12 years. I have an 11-year-old son called Samuel. I have been part of PCC since November 2020. I was raised in a Christian community but found my faith when I was a teenager by joining a local Christian youth group meeting. I became part of a youth mission group that was involved in community evangelism and outreach projects. As part of outreach projects, we travelled across Zimbabwe and Mozambique sharing the word of God with youth groups reaching out to remote communities and orphanages. I am passionate about evangelism and plan to get more involved with our church youth group and future outreach opportunities in the community and beyond.

Sara Hannan and John Wooldridge are also members of the Kingsclere PCC.

Ashford Hill with Headley PCC



Penny Stewart – Churchwarden – I am married to Graham and we have lived in Headley since 1973. We have 3 children and 8 grandchildren. I am involved in Kingsclere Charities and help run the local Riding for the Disabled Group. As a Churchwarden, I am also a trustee of the Ashford Hill Education Trust.

I grew up in a Christian family and have been a member of the Ashford Hill with Headley PCC and Churchwarden for over 15 years. I have seen both of our daughters married in St Paul's and am anxious for our churches to be as ecumenical as possible. In St Peter's, we enjoy traditional services and are often joined by members from Kingsclere and Ashford Hill.





Patrick Taylor – Churchwarden – BCM Creation Care; BCM Worship Leaders currently being undertaken

I have lived in the parish since 1984 and since then have been a regular worshipper in both of our churches. I have been a member of our PCC for a number of years, and more recently have been one of our two churchwardens. I have particular responsibility for St Paul's at Ashford Hill.

I have greatly enjoyed learning about the fundamentals of the Christian faith having attended the Christianity Explored and Discipleship Explored courses. More recently, I have attended the BCM Creation Care course put on by the Diocesan School of Mission and am currently undertaking the Worship Leaders course to enable me to lead services, if required.

More widely, I am now retired having had a very fulfilling career first as a Chartered Accountant and then as Finance Director and then CEO of leading commercial radio companies. I am blessed to have a wonderful and loving family. My wife and I love spending time together walking, cycling, skiing, playing bridge and enjoying time with family and friends.



Rupert Shelley - I'm married to Georgina with three children Freddie (15), Phoebe (13) and Jonty (11). We live just a few miles north of the parish. My work as the Director of Mission Partnerships at the Anglican Mission society Crosslinks keeps me busy both in the UK and also overseas. However, having been ordained in 2010 I enjoy serving the Church family through leading and preaching at occasional Sunday services. George works part time as CNS in Palliative Care at Basingstoke Hospital.

Colin Scott-Malden - Treasurer - Although I have lived in Baughurst for 46 years I have always worshipped at Ashford Hill and Headley. My working career was as a pilot with British Airways, flying B747s. I ran a software company from 1982-90 and after retiring from BA I qualified as a domestic energy assessor. My hobbies are golf, electronics and trying to control my garden. I have been married to my wife, Suzie, for 50 years and have two children and four grandchildren.



Lorainne Cusworth - I moved to the village in the early 1980s and saw that St Paul's played an important role in village life. I had an unreligious upbringing, and made the decision, as an adult, in 1989 to become Confirmed and to join the Christian community. I have since enjoyed the "traditional" style of worship which St Paul's provides. As a PCC member I work as part of a small team whose purpose is to keep the Christian tradition alive in our village and to safeguard St Paul's for future generations

The other members of the PCC are Rachel Chamings, Jane Loveless, Alison Goodyer & Terry Richardson



Our Organisation

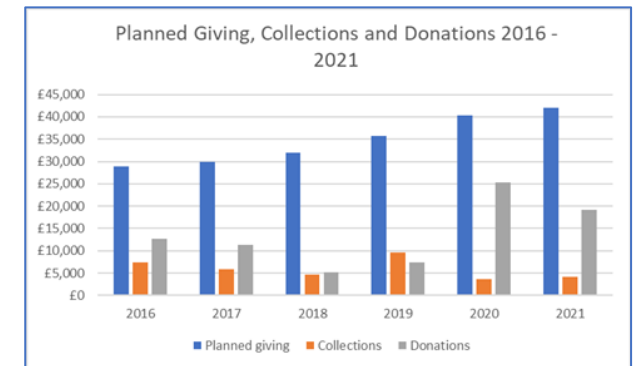
Governance

The two PCCs, working with the incumbent, oversee the day-to-day business of the parishes. There are two churchwardens in Ashford Hill with Headley, but currently in Kingsclere the position is vacant. The PCCs are supported by a ministry team consisting of a Licenced Lay Minister, a local retired member of clergy and our BCMs. This team meets regularly to discuss worship and matters relating to ministry in our benefice. We currently have two members of staff. Our administrator, Emma, is employed for 20 hours per week and our administrative assistant, Katie, is on a temporary contract until April 2023 for 5 hours per week. They both work from our benefice office in Kingsclere supporting both PCCs and the incumbent.

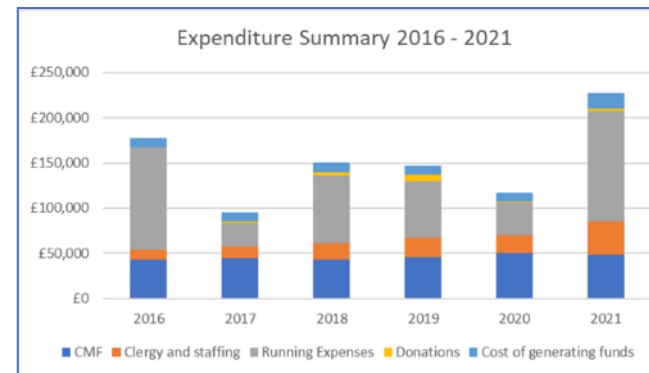
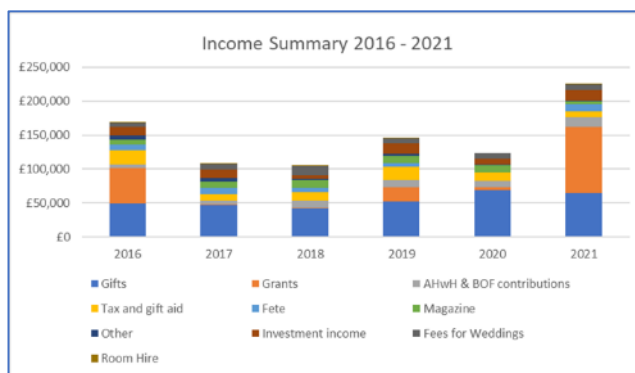
Finance - Kingsclere

The annual budget, fees, giving, and salaries are set by the PCC. Up until very recently, we have paid the requested amount towards our Common Mission Fund, but due to constraints at the end of 2022 we will contribute 75% of our request this year. The PCC has agreed a reserves policy to ensure that we can meet our commitments and deal with emergencies. The parish is blessed with over 45 regular givers and other generous donors who provide the financial basis for our work.

The parish has been successful in raising funds from the congregation and external funders to support Electrical Works, Decorating and Drainage projects over the last 6 years and our Children and Activities Programme in 2020. We held a successful Giving Day in 2021 to support mission, fabric and other issues which raised £48,000.



Administration costs incurred on behalf of Ashford Hill and Headley are reimbursed by that PCC on a regular basis.

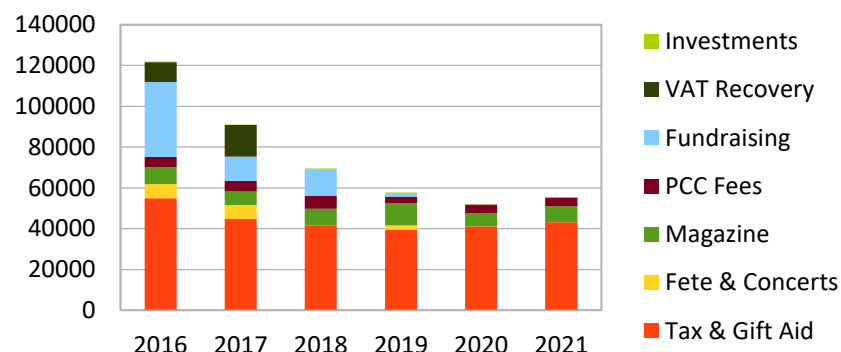


Finance - Ashford Hill with Headley

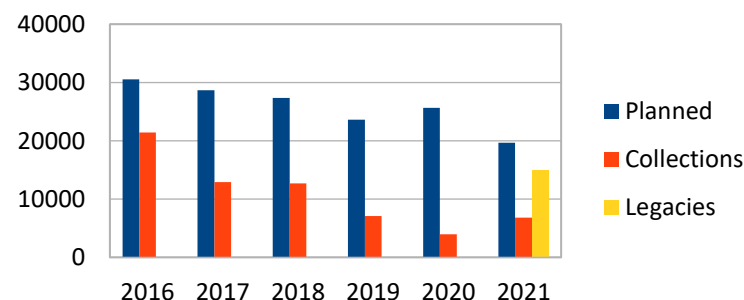
Our finances are in good shape. On 31st December 2021, we had just under £134,000 in our bank accounts, of which approximately £16,700 is in a restricted funds account for the benefit of St Peter's Church, Headley. In 2021, our income amounted to £70,899 (2020: £53,216), the increase being almost entirely due to legacies of £15,000 received in that year. Our costs in 2021 amounted to approximately £51,500 (2020: £57,100), the saving being partly due to a drop in our Common Mission Fund payments dropping by £3,000. We have always paid our CMF as requested and on time. While in 2020, we incurred a small deficit of just under £3,873, in 2021 we made a surplus of £19,328 largely as a result of the legacies just mentioned. (When considering these numbers, one always needs to be cautious since they are prepared on a cash basis as opposed to an accruals basis.)

Our planned giving has dropped off in recent years – 2021: £19,960 (2020: £25,632). In 2021, this was made up of 34 donors. This is an area which needs some attention and effort.

Income summary 2016-2021



Planned giving, Collections, Legacies 2016-2021



To view our most recent annual reports see our website: <https://www.clerewoodlands.org.uk/get-involved>



The House

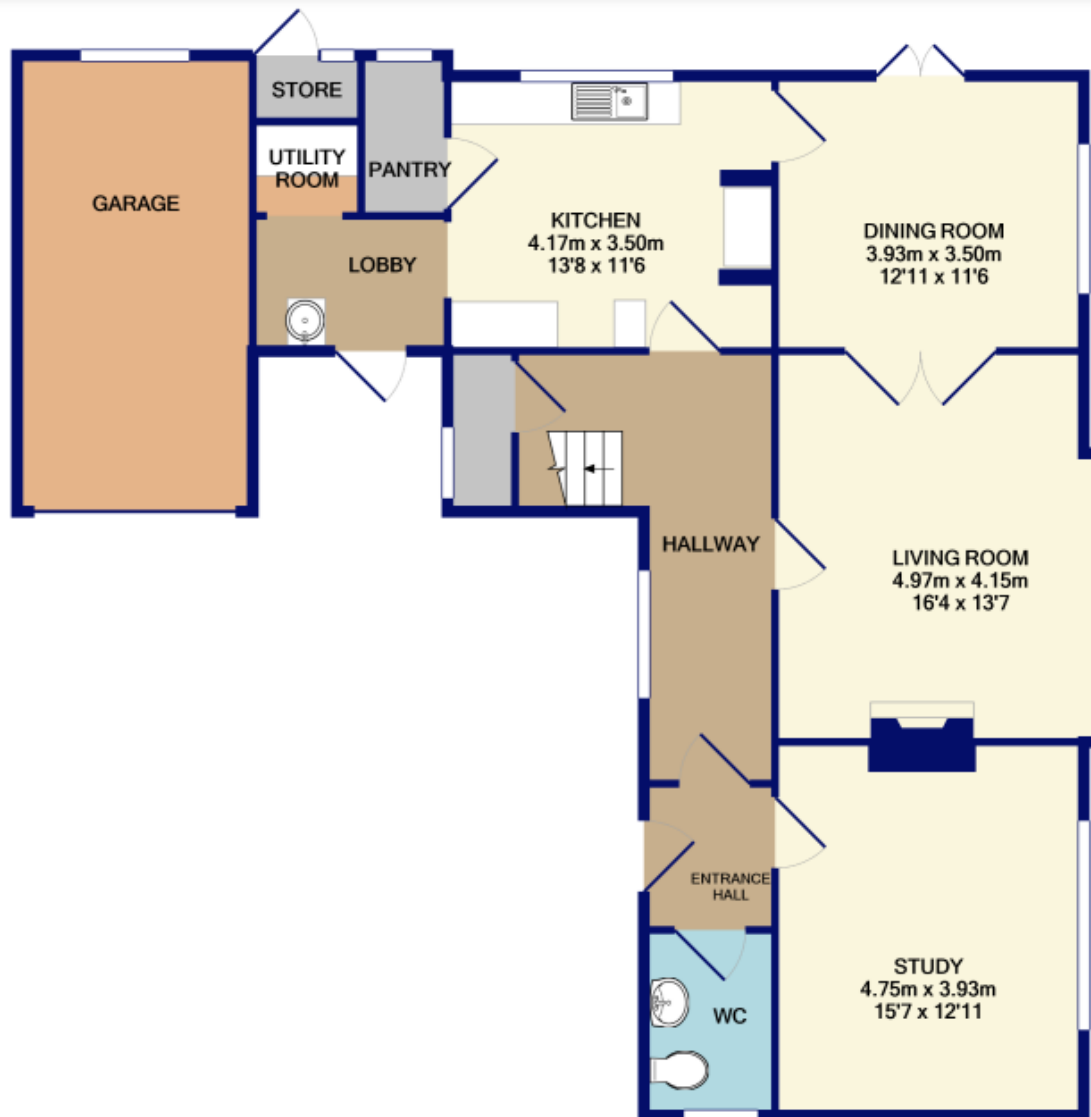
There are currently two vicarages in the benefice, both of which would be available at the time of appointment of our new priest in charge. We have therefore included details of them both and would be happy for the new incumbent to choose which of the two properties they would like to live in. The other would then be rented by the Diocese.

Kingsclere Vicarage has been used as the home of our benefice incumbent since the parishes joined, and has been re-decorated since our previous vicar and his family left. It is a detached house set in an attractive lane close to the centre of the village. It has a sloping garden, with lawns and trees, and a gateway offering a short-cut to the church via a quiet cul-de-sac. Shops, the health centre and school are all within comfortable walking distance.

The accommodation consists of 4 bedrooms, one with an en-suite, a family bathroom and separate WC on the first floor. Downstairs an entrance hall leads to a large study and cloakroom, before reaching the lounge/dining room. The kitchen is a good size and looks out over the garden to the rear of the house.

There is also a garage and garden store.





TOTAL APPROX. FLOOR AREA 202.6 SQ.M. (2180 SQ.FT.)

Whilst every attempt has been made to ensure the accuracy of the floor plan contained here, measurements of doors, windows, rooms and any other items are approximate and no responsibility is taken for any error, omission, or mis-statement. This plan is for illustrative purposes only and should be used as such by any prospective purchaser. The services, systems and appliances shown have not been tested and no guarantee as to their operability or efficiency can be given
Made with Metropix ©2022



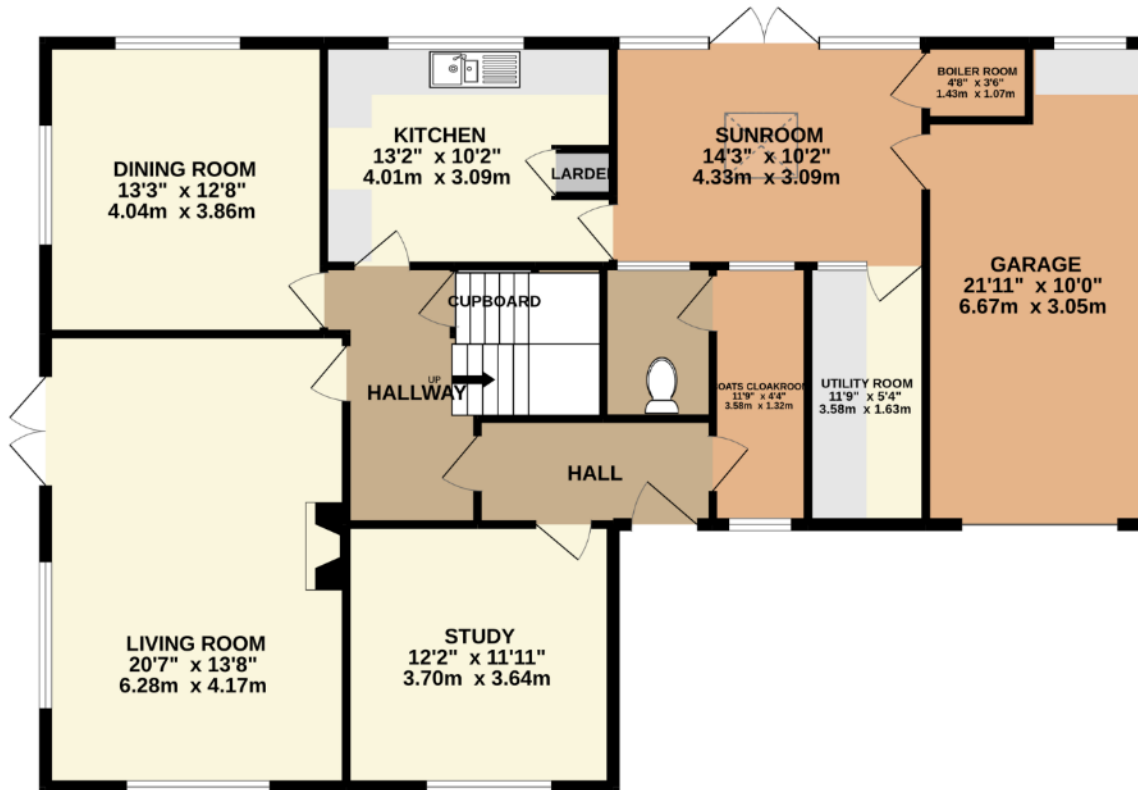
Ashford Hill Vicarage has been rented for the last few years but can be vacant should our new Priest-in-Charge choose that this is the house they would like to live in.

It is situated on a private driveway, which is just next door to the church. It has plenty of parking as well as a beautiful view of surrounding countryside. It is within just a few minutes walking distance to the primary school.

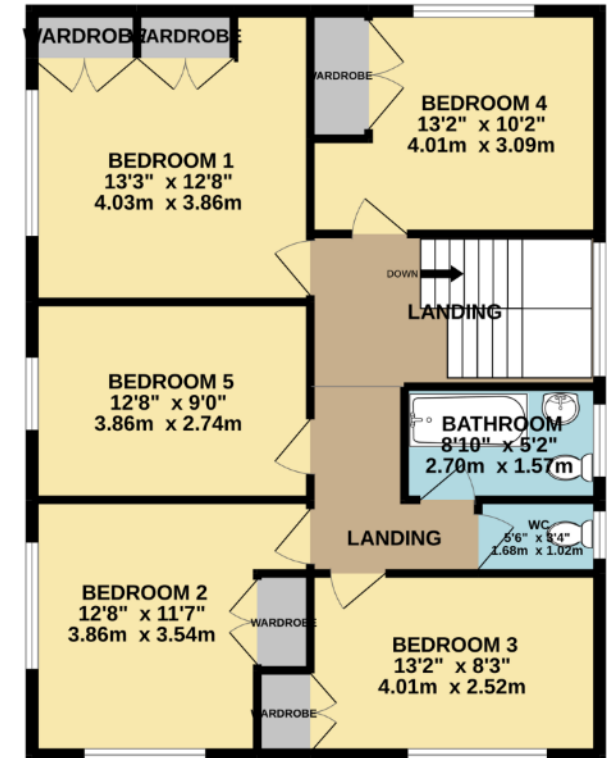
The accommodation consists of 5 bedrooms, a family bathroom and separate WC on the first floor. Downstairs there is a large study and cloakroom, living room, dining room and kitchen. A sunroom and utility room are accessed through the kitchen and/or garage.



GROUND FLOOR
1397 sq.ft. (129.8 sq.m.) approx.



1ST FLOOR
873 sq.ft. (81.1 sq.m.) approx.



TOTAL FLOOR AREA : 2271 sq.ft. (210.9 sq.m.) approx.

Whilst every attempt has been made to ensure the accuracy of the floorplan contained here, measurements of doors, windows, rooms and any other items are approximate and no responsibility is taken for any error, omission or mis-statement. This plan is for illustrative purposes only and should be used as such by any prospective purchaser. The services, systems and appliances shown have not been tested and no guarantee as to their operability or efficiency can be given.

Made with Metropix ©2022



Role Description

The role is for a Priest in Charge for the benefice of Kingsclere, Ashford Hill with Headley. The appointed person will lead our Church family within the benefice. The PCCs are keen to support the Priest in Charge and would encourage him/her to balance time with family and friends with the demands of parish life. There is support available for quiet days and retreats.

As is referred to elsewhere in this document, there are ongoing discussions with adjoining parishes and with the Diocese for an expansion of the benefice. However, there are currently no settled plans for this to happen. The appointed Priest in Charge will be expected to take the lead in such discussions, supported by the church wardens and PCCs within the benefice.

The **role** of the successful applicant will be to:

- lead our Church community in worship and prayer through an active programme of services, Bible reading & prayer groups and other channels that are deemed appropriate.
- preach the Word of God clearly in ways that connect with and enthuse those listening.
- welcome people who are at different stages of their faith journey, and to welcome different styles of faith and forms of worship.
- encourage people to our churches through pastoral offices, i.e. baptisms, confirmations, weddings, funerals, thanksgiving services.
- develop our existing benefice wide ministry team – to motivate, encourage and support ordained personnel, lay worship leaders and churchwardens - ensuring that all communities/villages are given appropriate support and attention.
- develop with the PCCs of the benefice a clear vision of how to grow our church community, and to develop a strategy to deliver that vision. To set clear and achievable timetables for agreed actions / plans; and to keep to those timetables.
- advocate and support by example the Five Marks of Mission as adopted by the General Synod
- develop a programme of learning and fellowship through courses
- build on the relationships we have with our local schools.
- build an enthusiastic and dedicated team to undertake pastoral care work.
- involve him/herself in the life of the local community throughout the benefice.
- be supportive of the leadership of the Diocese and the Deanery so as to ensure that our church family is actively and enthusiastically represented; and so that the interests of the wider church are supported.



In order for the successful applicant to undertake the role of Priest in Charge, we believe he or she should be a person with the following **personal attributes – a person who:**

- has a passion for Jesus, loves the Word of God and is excited about seeing God's word change lives in the church and the community
- is committed to prayer as a vital part of their life
- is keen to help others grow in their understanding of what the Bible has to teach us.
- lives his/her life by the two great commandments that Jesus gave to us, and who will therefore lead our church family to show why & how we should love God and how we can love our neighbours.
- has a warm character and is clearly interested in people.
- is a strong, experienced and inspiring leader, keen to develop a team of supportive people, including churchwardens and lay people to whom he/she is willing to delegate responsibilities.
- is prepared to lead different styles of service.
- has a good work ethic.
- is passionate about pastoral care throughout the benefice, particularly for those who are ill, infirm or nearing end of life.
- understands the importance of good governance, good financial controls and of planning the financial future of the benefice.
- will be interested in the three villages in the benefice, is passionate about and is committed to being an active part of our community
- has an open mind as to allowing people to use our churches for community based events such as concerts, debates etc.
- has reasonable IT/technology skills.

